

# KEGnology® – Container systems for any application






# SCHÄFER Container Systems – The KEG sector's leading innovators



All over the world, customers place their trust in SCHÄFER – and with good reason. There are already well over 25 million SCHÄFER KEGs in use all over the world, the best possible proof of quality and expertise in re-usable keg technology. The highgrade basis material for all SCHÄFER reusable KEGs is stainless steel. Fully automated deep drawing and finishing on state-of-the-art equipment also guarantee that we can manufacture KEGs of outstanding quality.

For four decades, SCHÄFER has set new standards with innovative ideas and products. With developments in line with market conditions and customer requirements, we have perfected our KEG-technology and established ourselves worldwide as a universal supplier.

<b>I. Milestones in KEGnology®</b>	<b>4</b>
<b>II. PLUS KEG/junior PLUS KEG</b> Fully and partly PU coated KEGs	<b>6</b>
<b>III. ECO KEG</b> Stainless steel KEGs with PP top and bottom rings	<b>8</b>
<b>IV. SUDEX KEG</b> 100 % stainless steel KEGs	<b>10</b>
<b>V. SOFT DRINK KEG</b> Fully and partly PU coated KEGs	<b>12</b>
<b>VI. Party-KEG</b> The self-service KEG	<b>14</b>
<b>VII. freshKEG</b> Dispensing system with CO <sub>2</sub> -inside technology	<b>16</b>
<b>VIII. smartDRAFT</b> Dispensing system for restaurants and small caterers	<b>18</b>
<b>IX. Container solutions for wine</b> SCHÄFER KEGs for wine, prosecco or sparkling wine	<b>22</b>
 <b>X. Branding</b> The KEG as a brand ambassador	<b>24</b>
<b>XI. KEG Service/Accessories</b>	<b>26</b>
<b>XII. Your Contacts</b>	<b>28</b>
<b>XIII. SCHÄFER WERKE</b>	<b>30</b>



I. Milestones in KEGnology®

Improvement of the KEGs' advertising effectiveness. Coloured decors and brewery logos make SCHÄFER KEGs an effective brand carrier



SCHÄFER presents three newly developed products at the Interbrau: SOFT DRINK KEG, junior PLUS KEG and keggy, the KEG with the integrated CO2 supply



Transponders are introduced for KEG Identification. Combined with datixPLUS, this is the perfect control and logistics system



SCHÄFER begins production of 100 % steel KEGs: With SUDEX KEGs, SCHÄFER now has a comprehensive KEG range. SCHÄFER is the first in the industry to gain DIN EN ISO 9001 TÜV-Cert approval



1978

1983

1985

1989

1990

1992

1993

1995



SCHÄFER develops the first KEG with a stainless steel liner and polyurethane(PU) jacket: the PLUS KEG's successful career is launched



The KEGs are fitted with a safety bursting point and are GS approved to create a new standard of safety. The datixPLUS character code provides the basis for logistics



SCHÄFER succeeds in manufacturing a CFC-free PU jacket and increases user value by enabling partial repairs; two significant environmental benefits



In-mould labelling perfects the coloured decoration. SCHÄFER is first on the market to receive Coca-Cola Approval

# Milestones in KEGnology®

The new ECO KEG wins two of the most coveted international design awards:

- iF Ecology Design Award 2000
- iF Product Design Award 2000



smartDRAFT™:  
The dispensing revolution for restaurants and catering. Ingeniously simple dispensing unit with a one-way beer line



SCHAFER WERKE, as the KEG sector's leading innovators, received an award as part of the campaign "Germany at its best: North-Rhine Westphalia"



DIN ECO KEG: the KEG with the coloured top and bottom rings in DIN standard sizes of 20, 30 and 50 litres.



1998



Partly PU-coated SOFT DRINK KEGs and junior PLUS KEGs supplement the product range, naturally with proven SCHÄFER benefits, like safety bursting point and character code, stackability and noise reduction

2000



freshKEG: genuine draught beer, any place, any time. The new generation of SCHÄFER KEGnology is presented at the drinktec in Munich

2006



New additions to the smartDRAFT™ family

- smartDRAFT™ MINI,
- smartDRAFT™ STANDARD
- smartDRAFT™ TROPICAL

2009

2013

2014



SCHAFER extends its range, introducing PU-coated Party-KEGs with Bavarian bung-hole

2015

## II. PLUS KEG and junior PLUS KEG



**PLUS KEG:** With over 7 million KEGs on the market worldwide, this is the best seller in the entire range. All the benefits in one single KEG. Perfect technology, easy to handle, full PU coating, tested for safety, distinctive brand presentation and reliable logistics. What more can a KEG offer? For beer and wine, PLUS KEG is the first choice. Polyurethane coated KEG with stainless steel liner: 15, 20, 30, 40 and 50 litres in DIN standard, 30 and 50 litres in Euro standard form.

**junior PLUS KEG:** whether fully or partly coated with polyurethane, the junior can offer all the benefits of the PLUS KEG, plus compact dimensions. For beer and wine available in 10.4, 15.5 or 20.5 litres in DIN standard.

### Technical Data

<b>Stainless steel liner material</b>	standard: mat. no. 1.4301, AISI 304 special: mat. no. 1.4571, AISI 316
<b>Full coating</b>	Polyurethane (PU), CFC-free, UV-stabilised
<b>Partly coated (only junior PLUS KEG)</b>	10.4 l and 20.5 l
<b>PU colour</b>	standard: black special colours: on request
<b>Neck and fitting</b>	all current types
<b>Operating overpressure</b>	3 bar
<b>Test pressure</b>	minimum 8 bar overpressure
<b>Opening pressure of safety bursting point</b>	40 ± 5 bar overpressure PLUS KEG 35 ± 5 bar overpressure junior PLUS KEG
<b>Numbering</b>	standard embossed (PLUS KEG only)
<b>Coding (options)</b>	Character code datixPLUS (for standard JPK)/ transponder/barcode
<b>Bavarian tap</b>	PLUS KEG -DIN and junior PLUS KEG available with spring valve, Daimer valve or bung hole
<b>Repairs</b>	partial only, new PU jacket possible

### PLUS KEG DIN type

Content	15.4 l 3.96 US-gal	20.5 l 5.28 US-gal	30.5 l 7.93 US-gal	40.5 l 10.57 US-gal	50.5 l 13.21 US-gal
Filling volume	15 l	20 l	30 l	40 l	50 l
Height	260 mm	330 mm	400 mm	509 mm	600 mm
External Ø	395 mm	395 mm	395 mm	381 mm	395 mm
Weight <sup>1</sup>	approx. 7.5 kg	approx. 9.0 kg	approx. 9.5 kg	approx. 10.0 kg	approx. 12.3 kg

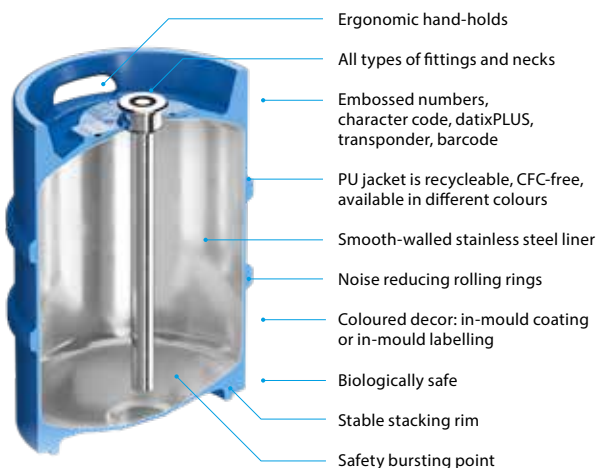
### PLUS KEG Euro type

Content	30.5 l 7.93 US-gal	50.5 l 13.21 US-gal	
Filling volume	30 l	50 l	
Height	365 mm	532 mm	
External Ø	425 mm	425 mm	
Weight <sup>1</sup>	approx. 10.0 kg	approx. 12.3 kg	

### junior PLUS KEG

Content	10.4 l 2.75 US-gal	15.5 l <sup>2</sup> 4.10 US-gal	20.5 l 5.42 US-gal	
Filling volume	10 l	15 l	20 l	
Height	326 mm	443 mm	560 mm	
External Ø	239 mm	239 mm	239 mm	
Weight <sup>1</sup>	approx. 3.6 kg	approx. 4.4 kg	approx. 5.2 kg	

US-gal = 3.785 l <sup>1</sup> weight without fitting <sup>2</sup> only available fully coated



# Premium KEG for strong brands



## Distinctive brand presentation

- PU jacket available in all colours
- In-mould coating and labelling process makes any décor possible
- Extremely quiet handling







Design  
Award  
Winner



### Outstanding. Light. Robust.

- Optimum brand presentation
  - Coloured top and bottom rings
  - Great decorative potential for KEG liner
- Perfect handling
  - Up to 36 % lighter than 100 % steel KEGs
  - Logistics benefit: approx. 6 % more content in a 40" container
- Shock absorber effect of top and bottom rings guarantees maximum stability





# Design KEG for strong brands



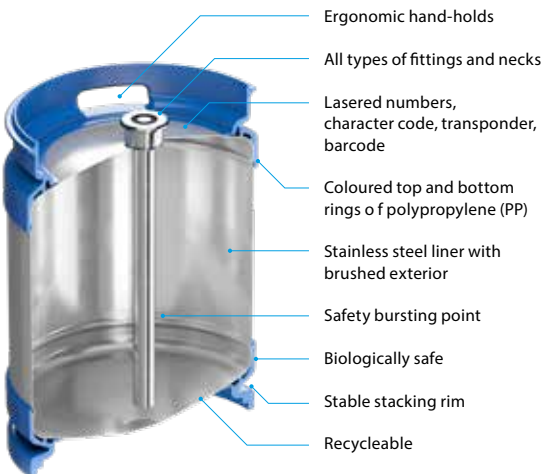
The **ECO KEG** is a trend-setter, confirmed immediately by two international awards – for innovative design and for exceptional ecological benefits. Both awards came from the internationally recognised "Industrie Forum Design" in Hanover.

The ECO KEG consists of a stainless steel liner, fitted with top and bottom rings of polypropylene (PP). These are connected to the liner by a safety clip-on technique and are therefore replaceable. This makes the KEG more flexible, economical and more convenient in operation and handling.

**The ECO KEG is available in all sizes from 5 - 58.67 litres and for operating pressures of 3 bar acc. to DIN 6647-1 (for beer and wine) and 7 bar acc. to DIN 6647-2 (for soft drinks)**

## Technical Data

<b>Stainless steel liner material</b>	standard: mat. no. 1.4301, AISI 304 special: mat. no. 1.4571, AISI 316
<b>Top and bottom rings</b>	PP (polypropylene), UV-stabilised, recyclable material
<b>PP colour</b>	standard black, other colours acc. to customer wishes
<b>Neck and fitting</b>	all current types
<b>Operating overpressure</b>	3 bar or 7 bar
<b>Test pressure</b>	minimum 8 bar overpressure
<b>Opening pressure of safety bursting point</b>	35 ± 5 bar overpressure (KEGs Ø 239 mm) 40 ± 5 bar overpressure (KEGs Ø 374 and 407 mm)
<b>Numbering</b>	standard, lasered
<b>Coding (options)</b>	character code/transponder/ barcode/QR code
<b>Bavarian tap</b>	not available
<b>Repairs</b>	PP rings can be replaced
<b>Ecology</b>	reusable system; all parts recyclable



## ECO KEG DIN type

Content	20.5 l 5.28 US-gal	30.4 l 7.93 US-gal	50.4 l 13.21 US-gal	
Filling volume	20 l	30 l	50 l	
Height	310/330 mm	400 mm	600 mm	
External Ø	374 mm	374 mm	374 mm	
Weight <sup>1</sup>	approx. 6.0 kg	approx. 7.3 kg	approx. 9.2 kg	

## ECO KEG Euro type

Content	20.5 l 5.28 US-gal	25.5 l 6.61 US-gal	30.4 l 7.93 US-gal	50.4 l 13.21 US-gal	58.67 l 15.5 US-gal
Filling volume	20 l	25 l	30 l	50 l	58 l
Height	283 mm	324 mm	365 mm	532 mm	603 mm
External Ø	407 mm	407 mm	407 mm	407 mm	407 mm
Weight <sup>1</sup>	approx. 6.8 kg	approx. 7.3 kg	approx. 7.8 kg	approx. 9.3 kg	approx. 10.3 kg

## ECO Junior KEG

Content	5.2 l 1.37 US-gal	10.4 l 2.75 US-gal	15.5 l 4.10 US-gal	19.5 l 5.16 US-gal	20.5 l 5.28 US-gal
Filling volume	5 l	10 l	15 l	19 l	20 l
Height	200 mm	326 mm	443 mm	538 mm	560 mm
External Ø	239 mm	239 mm	239 mm	239 mm	239 mm
Weight <sup>1</sup>	approx. 1.9 kg	approx. 2.5 kg	approx. 3.2 kg	approx. 3.6 kg	approx. 3.7 kg

US-gal = 3.785 l <sup>1</sup> weight without fitting

## IV. SUDEX KEG



Manufactured completely from high-grade stainless steel: the **SUDEX stainless steel KEG** provides proven SCHAFFER technology throughout the entire range. Robust, durable and easy to use – a genuine classic KEG for beer and wine. Wide selection included: 15 to 50 litres acc. to DIN and EURO standards (EURO standard from 20 litres), 1/6 barrel (Ø 233 mm), 1/4 (Ø 283 or 404 mm) and 1/2 barrel (Ø 404 mm acc. to US standard and 10 to 25 litre slim-form KEGs (Ø 278 mm).

### Technical Data

<b>Material</b>	standard: mat. no. 1.4301, AISI 304 special: mat. no. 1.4571, AISI 316
<b>Neck and fitting</b>	all current types
<b>Stackable</b>	on request
<b>Operating overpressure</b>	3 bar or 7 bar
<b>Test pressure</b>	minimum 8 bar overpressure
<b>Opening pressure of safety bursting point</b>	35 ± 5 bar overpressure
<b>Numbering</b>	embossed (standard)
<b>Coding (options)</b>	character code/transponder/barcode/QR code
<b>Bavarian tap</b>	not available
<b>Repairs</b>	possible

### SUDEX KEG DIN type

Content	10.5 l 2.64 US-gal	15.5 l 3.96 US-gal	20.5 l 5.28 US-gal	30.5 l 7.93 US-gal	50.5 l 13.21 US-gal
Filling volume	10 l	15 l	20 l	30 l	50 l
Height	208 mm	258 mm	310 mm	400 mm	600 mm
External Ø	363 mm	363 mm	363 mm	381 mm	381 mm
Weight <sup>1</sup>	approx. 7.2 kg	approx. 7.5 kg	approx. 8.2 kg	approx. 9.4 kg	approx. 12.0 kg

15/20 l = without roller

### SUDEX KEG Euro type

Content	20.5 l 5.28 US-gal	25.5 l 6.61 US-gal	30.5 l 7.93 US-gal	50.5 l 13.21 US-gal	
Filling volume	20 l	25 l	30 l	50 l	
Height	285 mm	327 mm	365 mm	532 mm	
External Ø	395 mm	395 mm	408 mm	408 mm	
Weight <sup>1</sup>	approx. 8.5 kg	approx. 9.1 kg	approx. 10.1 kg	approx. 12.6 kg	

20/25 l = without roller

### SUDEX Slimline KEG ø 237 mm

Content	20.5 l 5.28 US-gal	20.5 l 5.28 US-gal			
Filling volume	20 l	20 l			
Height	560 mm	568 mm			
External Ø	237 mm	237 mm			
Weight <sup>1</sup>	ca. 6.0 kg	approx. 6.0 kg			

### SUDEX Slimline KEG ø 278 mm

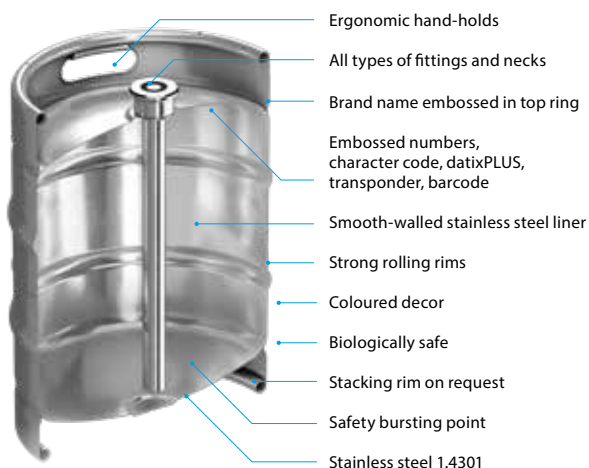
Content	10.5 l 2.64 US-gal	12.5 l 3.17 US-gal	15.5 l 3.96 US-gal	20.5 l 5.28 US-gal	25.5 l 6.61 US-gal
Filling volume	10 l	12 l	15 l	20 l	25 l
Height	281 mm	314 mm	365 mm	447 mm	532 mm
External Ø	278 mm	278 mm	278 mm	290 mm	290 mm
Weight <sup>1</sup>	approx. 4.5 kg	approx. 4.9 kg	approx. 5.4 kg	approx. 6.3 kg	approx. 7.2 kg

10/12/15 l = without roller

### SUDEX KEG US Standard

Content	19.5 l ½ Barrel	29.33 l ¼ Barrel tall	29.33 l ¼ Barrel	58.67 l ½ Barrel	
Filling volume	19 l	29 l	29 l	58 l	
Height	590 mm	590 mm	345 mm	590 mm	
External Ø	233 mm	283 mm	404 mm	404 mm	
Weight <sup>1</sup>	approx. 5.6 kg	approx. 7.9 kg	approx. 9.9 kg	approx. 13.5 kg	

US-gal = 3.785 l <sup>1</sup> weight without fitting



# Classic KEG for strong brands



## Wide range of decorative possibilities

- Coloured stripes between, above and below the rolling rims
- Logo presentation (2-colour, silk screening)
- Robust stickers
- Embossing in top and bottom rings
- Engraving and laser printing in the neck and base





#### Brand ambassador for Premix

- For transport and storage of soft drinks
- PU jacket available in any colour
- In-mould coating and labelling process makes any decor possible





# Premium KEG for soft drinks



The **SOFT DRINK KEG** from SCHÄFER has many trend-setting benefits. Coca-Cola, Pepsi, Sinalco and other large-scale bottlers are happy to rely on SCHAFFER expertise. This cool container proved a great success and was awarded the State Design Prize for its clarity and aesthetic appearance. Polyurethane coated KEG with stainless steel liner, DIN compliant, in 10.4 l to 41 litre sizes or, partly coated, in 10.4 l or 20.5 litre sizes or with polypropylene (PP) top and bottom rings in 5.2 to 20.5 litre sizes. Ideal for all soft drinks.

## Technical Data

### Stainless steel liner material

standard: mat. no. 1.4301, AISI 304  
special: mat. no. 1.4571, AISI 316

### Full coating and partly coated: Top and bottom rings (ECO KEG)

PU (polyurethane), CFC free, UV-stabilised  
PP (polypropylene), CFC free, UV-stabilised.  
recyclable material, replaceable  
standard: black, other colours on request  
L system or special AFG basket and flat fitting

### PU and PP colour

### Neck and fitting

### Operating overpressure

### Test pressure

### Opening pressure of

### safety bursting point

### Numbering

7 bar

min. 8 - 10 bar overpressure

standard: 35 ± 5 bar overpressure

Coca Cola: 22 + 2 bar overpressure

standard, lasered (ECO KEG)

embossed standard (PLUS KEG/Sudex KEG)

character code/transponder/barcode/

QR code datixPLUS: we will be happy to advise you!

possible (SOFT DRINK KEG)

PP rings are replaceable (ECO KEG)

Soft drink KEG: yes

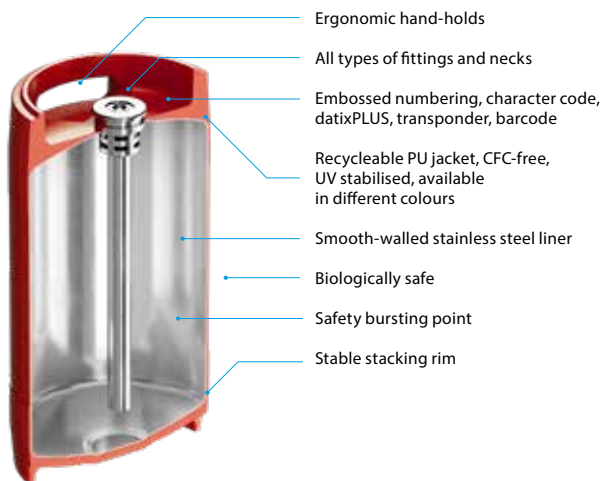
Eco Soft drink KEG: yes

Stainless steel Slimline KEG: no

### Coding (depending on type)

### Repairs

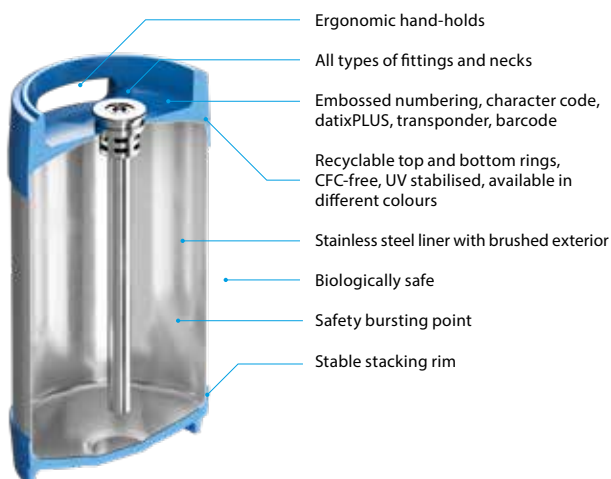
### Stackable



## SOFT DRINK PLUS KEG

Content	10.4 l 2.75 US-gal	15.5 l <sup>3</sup> 4.10 US-gal	20.5 l 5.42 US-gal	41 l <sup>3</sup> 10.83 US-gal
Filling volume	10 l	15 l	20 l	40 l
Height	326 mm	443 mm	560 mm	510 mm
External Ø	239 mm	239 mm	239 mm	381 mm
Weight <sup>2</sup>	approx. 3.5 kg	approx. 4.6 kg	approx. 5.5 kg	approx. 10.0 kg

<sup>2</sup> weight with L type fitting <sup>3</sup>only available fully coated



## SOFT DRINK ECO KEG

Content	5.2 l 1.37 US-gal	10.4 l 2.75 US-gal	15.5 l 4.10 US-gal	20.5 l 5.28 US-gal
Filling volume	5 l	10 l	15 l	20 l
Height	200 mm	326 mm	443 mm	560 mm
External Ø	239 mm	239 mm	239 mm	239 mm
Weight <sup>1</sup>	approx. 2.0 kg	approx. 2.7 kg	approx. 3.4 kg	approx. 4.0 kg

## SOFT DRINK Stainless steel KEG ø 237 mm

Content	20.4 l 5.28 US-gal
Filling volume	20 l
Height	568 mm
External Ø	237 mm
Weight <sup>1</sup>	approx. 5.0 kg

US-gal = 3.785 l <sup>1</sup> weight without fitting

## VI. Party-KEG



Bunghole

Tap

Air inlet valve for flat fitting

Air inlet valve for basket fitting

**Party-KEGs** from SCHÄFER: simply knock in the tap and the fun can begin: Enjoy tapping fresh draught beer. The KEGs with the insulating PU coating in sizes of 10 to 20 litres can be decorated individually, according to customer wishes. Whether in one or more colours, with a logo or slogan in the middle of the barrel or with all-round lettering – we can help you increase your brand recognition even further. The spring valve closes the KEG automatically once the tap is removed. This prevents dripping and guarantees optimum protection for the beer inside.

### Technical Data

#### Stainless steel liner material

standard: mat. no. 1.4301, AISI 304  
special mat. no. 4571, AISI 316

#### Coating

##### PU colour

Polyurethane (PU), CFC free, UV stabilised  
standard: black

other colours and multi-colour on request

#### Neck and fitting

##### Operating overpressure

3 bar

##### Test pressure

min. 8 bar overpressure

##### Opening pressure of safety bursting point

40 ± 5 bar overpressure

##### Numbering

standard embossed

##### Coding (options)

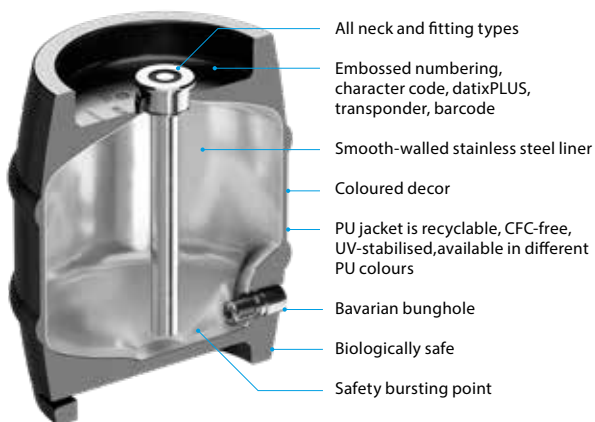
datixPLUS/transponder/barcode

##### Bavarian tap

Party KEG available with spring valve or bunghole, Daimer bunghole also possible as option

##### Repairs

partial only, new PU jacket possible



All neck and fitting types

Embossed numbering, character code, datixPLUS, transponder, barcode

Smooth-walled stainless steel liner

Coloured decor

PU jacket is recyclable, CFC-free, UV-stabilised, available in different PU colours

Bavarian bunghole

Biologically safe

Safety bursting point

### Party-KEG

Content	10 l	15 l	20 l	30 l
Filling volume	10 l	15 l	20 l	30 l
Height	327 mm	367 mm	408 mm	470 mm
External Ø	289 mm	317 mm	343 mm	386 mm
Weight <sup>1</sup>	approx. 5.3 kg	approx. 7.0 kg	approx. 8.8 kg	approx. 12.0 kg

<sup>1</sup> Weight without fitting

# The self-service KEG



## Show your true colours

- Whether in one or more colours: our Party-KEGs have a wide range of decoration possibilities
- Application of logos and slogans in the middle
- Eye-catching all-round printing





### Flexible small-scale dispensing system

- "Two-chamber system": KEG has integrated dispensing gas supply – no handling of CO<sub>2</sub>-cylinders required
- Easy-to-clean plastic dispenser head
- Fresh draught beer – any time, any place





# Real draught beer, any place, any time



**freshKEG** is simply ideal for parties and festivals, large-scale events, bistros and catering businesses, because the two-chamber system with "CO<sub>2</sub> inside" and the freshKEG dispense head, with the world's shortest beer dispensing line, guarantee maximum flexibility and quality. Any place, any time. The perfect way to have fun, increase sales and reduce the workload! Specially developed cooling accessories (ice-packs, cooler) make sure the beer is at exactly the right temperature and that the customers are extremely satisfied.

## Technical Data

<b>Stainless steel liner material</b>	standard: mat. no. 1.4301, AISI 304 special: mat. no. 1.4571, AISI 316
<b>Top and bottom rings</b>	polypropylene (PP), UV-stabilised, recyclable material
<b>PP colour</b>	standard: black gloss, other colours on request
<b>Neck and fitting</b>	freshKEG safety system
<b>Operating overpressure</b>	3 bar/7 bar
<b>Test pressure</b>	approx. 9 bar overpressure
<b>Opening pressure of safety bursting point</b>	standard: 25 ± 7 bar overpressure
<b>Numbering</b>	standard, lasered
<b>Coding (options)</b>	character code/transponder/barcode
<b>Dispense head</b>	dispense head with integrated compensator and pressure reducer
<b>Flow</b>	1.5 to 2.0 litres/minute (standard setting), depending on pressure and temperature
<b>Repairs</b>	PP rings, CO <sub>2</sub> valve and parts of the fitting can be replaced re-usable system. All component parts can be recycled
<b>Ecology</b>	can be used for almost all beverages
<b>Application</b>	according to instructions, max. cleaning temperature 55°C
<b>Cleaning dispense head</b>	
<b>Cooling</b>	Ice packs, special freshKEG cooler



## freshKEG DIN 6647-1 u. 2

Content*	5.2 l 1.37 US-gal	10.3 l 2.72 US-gal
Filling volume	5 l	10 l
Height	258 mm	394 mm
External Ø	253 mm	253 mm
Weight	ca. 3.6 kg	ca. 4.7 kg

\* other sizes with contents of between 5 and 15 litres are available depending on the order volume

## VIII. smartDRAFT



### Experience real flavour

Two-thirds of all beer drinkers prefer the flavour of draught beer to bottled beer.

### smartDRAFT™ : So that beer tastes the way beer should!

Thanks to the one-way beer line and the pre-set temperature and pressure, a perfect draught beer experience is guaranteed.

### Open up new possibilities

smartDRAFT™: top quality guarantees pure enjoyment, whether you use it as an alternative to an existing bar or as an additional dispensing point for special beers or trendy drinks, or even as a mobile bar for outdoor events.

Open up new market opportunities for your business by offering fresh draught beer in premium quality even where, up to now, only bottles were available!

### The benefits that make the difference

For breweries, their customers in the restaurants, catering business, the retail trade and, above all, for consumers, smartDRAFT™ offers a great range of convincing benefits.

#### Flavour of the highest quality

- Lastingly fresh draught beer flavour and best dispensing quality
- Perfect drinking temperature, all the time
- Perfect hygiene thanks to the one-way beer line
- Integrated CO2 supply

#### Economical dispensing system

- Ideal for smaller restaurants and catering businesses
- Low investment costs
- No tapping wastage
- No cleaning required for beer lines and tap, no servicing and maintenance costs
- New sales potential due to mobile dispensing

# Fresh draught beer for restaurants and small caterers



## The highlight for small restaurants and caterers

- Convincing dispensing quality
- Completely hygienic due to one-way beer line
- Fully pre-set and tamper-proof system
- High-quality, elegant design for finest restaurant environments
- Ideal advertising space, direct access to customers





**smartDRAFT™ KEG**

<b>Content</b>	<b>10.3 l / 2.72 US-gal</b>
Filling volume	10 l
Weight	approx. 5.0 kg
<b>Dimensions</b>	
Height	411 mm
External Ø	253 mm
Material grades for stainless steel liner	standard: mat. no. 1.4301, AISI 304 special: mat. no. 1.4571, AISI 316
Top and bottom rings	PP (polypropylene), UV-stabilised, recycleable material
PP colouring	standard: black, other colours available on request
Neck and fitting	smartDRAFT™ safety system
Operating overpressure	max. 3 bar
Test pressure	approx. 9 bar overpressure
Safety burst point triggering pressure	25 ± 7 bar overpressure
Numbering	standard, lasered
Coding (optional)	datixPLUS character code /transponder/barcode
Ecology	reusable system, all parts are recycleable

**smartDRAFT™ TAP**

<b>Dimensions</b>	
Flow rate <sup>1</sup>	1.8 l/minute at pre-set pressure of 1.1 bar
Weight	1.6 kg
Height	186 mm
Width	124 mm
Length	346 mm

<sup>1</sup> for all beers with 4.5 – 5.5 g CO<sub>2</sub>/l in a temperature range of 3 to 8 °C

**smartDRAFT™ One-way beer line**

<b>Dimensions</b>	
Length	270 mm
Weight	20 g



# Technology in detail



## smartDRAFT™ Cooler

Dimensions	
Height	706 mm
Width	338 mm
Depth/with drip tray	330/455 mm
Weight	25 kg
Tapping temperature	4 °C to 18 °C
Room temperature	up to 32 °C
Nominal voltage/frequency	230 V/50 Hz
Wattage	150 W
Power consumption	0.75 kWh
Coolant	R134a
Coolant amount	0.11 kg



### Solutions for all applications

- Container solutions for your wine and sparkling wine
- Top quality for fine wines
- A big plus in efficiency and economy



# SCHÄFER Container Systems – The container solution for your wine

Beverages in barrels are the latest trend. More and more people at many different occasions increasingly prefer to take a glass of wine, Prosecco or sparkling wine. With its range of reusable KEGs, SCHÄFER can offer solutions tailored to this gastronomic and catering trend. In contrast to numerous opened bottles, SCHÄFER KEGs guarantee enjoyment right down to the last drop, without any loss in quality.

You would like to offer your customers a large selection of beverages in the best possible quality, but only have limited space? Then our slim-line KEG solutions are just what you need!



**SCHÄFER junior PLUS KEG –**  
Compact and slim



**SCHÄFER Edelstahl-KEG –**  
Classical and slim



**SCHÄFER ECO junior KEG –**  
The lightweight



**SCHÄFER freshKEG –**  
Fresh draught beer, any place, any time



**SCHÄFER smartDraft™ –**  
Fresh wine for small restaurants



### Branding

**In-mould Coating:** In-mould Coating involves a lacquer or paint being sprayed into the foam mould at defined points. The polyurethane (PU), which is sprayed into the mould at high pressure, bonds with the paint, forming a very strong and scratch-resistant compound.

**In-mould Labelling:** For in-mould labelling, a carrier foil with almost any complex design, (a logo or photo, for instance) is placed into the mould. After the foaming process, the carrier foil is peeled off the barrel to reveal a design of perfect quality that has adhered completely to the foam.

**Electro-chemical signature:** The electro-chemical signature applies a logo to the stainless steel surface, by means of an electrolyte solution and electric current.

**Labelling:** In this process, a special carrier foil with an innovative combination of paint and adhesive is applied to the stainless steel liner. When the carrier foil is removed, the design is firmly fixed to the barrel

### SCHÄFER KEG App



Configure your own individual KEG, find out more about our different models, save your data or send us a concrete inquiry. The KEG App from SCHÄFER Container Systems provides with an informative product overview so you can configure your own KEG at your own convenience, wherever you happen to be!

Simply click on the free download at:

[www.schaefer-container-systems.de/app](http://www.schaefer-container-systems.de/app)





# The KEG as a brand ambassador

## ECO KEG: Stainless steel KEGs with top and bottom rings of PP

### KEG body



- Electro-chemical signature



- Labelling
- Coloured stripes

### Top and bottom rings

### Top ring



- Coloured top and bottom rings of polypropylene (PP)
- Embossing for Slimline and Euro diameters
- Coloured labelling possible on Euro diameter

### KEG neck and base



- Laser printing, also possible on KEG base (2D barcode, logo, numbering, names etc.)

## SUDEX KEG: 100 % stainless steel KEGs

### KEG body



- 2-colour silk screening
- Labelling



- Coloured stripes between, above and below upper and lower rolling rims

### Top and bottom rings



- Embossing

### KEG neck and base



- Laser printing and engraving (2D barcode, logo, numbering, names etc.)

## PLUS KEG/junior PLUS KEG: Fully PU-coated KEGs

### KEG body



- In-mould coating
- In-mould labelling



- Coloured stripes between, above and below upper and lower rolling rims (advertising space)

### KEG neck and base



- In-mould coating
- In-mould labelling



- Embossing



To ensure your KEGs remain fully functional over many years in their hard working environments, SCHÄFER Container Systems offers their customers a comprehensive KEG service.

#### Repair and refurbishing of all KEG types

- Repairing damage to PU jacket
- Replacing damaged top and bottom rings on ECO KEGs
- Repairing dents on top and bottom rings
- Neck repairs
- Volume alterations, e.g. from 50 l to 30 l (except on PU coated KEGs)
- Retrofitting transponders of all types
- Neutralising logos
- Application of new logos
- Re-working defective weld seams (except on PU coated KEGs)
- Polishing
- Calibration

# Our service for you

SCHÄFER offers the beverage industry not only high-quality KEGs for every application, but also perfectly matching system components. We look at things from our customers point of view, thinking in terms of complete units, because only a system which functions as an enclosed compatible unit can really bring success. For you and us. On this page we would like to present a small selection of ideas from our complete SCHÄFER range. If you would like more details, or if you are interested in proposals for special solutions, we will be happy to offer you personal and comprehensive advice at any time. Just contact us.



### **Fitting types**

*Whether basket, flat or combination, soft drink, standard or safety, threaded or threadless fittings, all fitting types can be used*



### **Dispense heads**

*For each fitting there is the appropriate dispense head. Simply attach and tap. Clean, fast and reliable*



### **Traceability**

*All SCHÄFER KEGs can be fitted with a permanently integrated coding system, such as character code, barcode, transponder or datixPLUS, according to your requirements.*



*Coding systems bring more transparency to logistics and allow comprehensive container management*



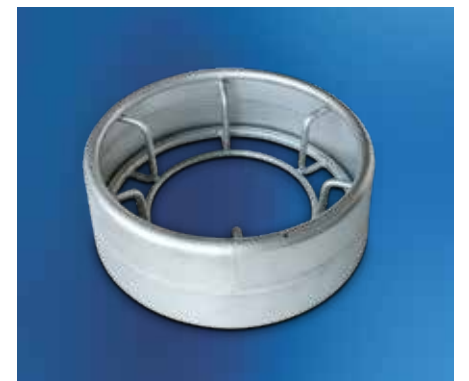
### **Control KEG**

*SCHÄFER control KEGs serve to check the filling, the cleaning and the pressure. Control KEGs are available for all SCHÄFER KEG types*



### **Cleaning KEG**

*Cleaning KEGs from SCHÄFER optimise the decentralised cleaning of the dispense facility from the dispense head to the tap. Up to five beverage pipes with KEG connections can be cleaned at the same time. Moreover the Cleaning KEG for soft-drink dispenser systems is available with an additional connection type for older container connectors*



### **Adapter ring**

*The various adapter rings allow SCHÄFER Slimline KEGs to be used on existing cleaning and filling plants for DIN or Euro standard KEGs*

### Division Management Sales

**Guido Klinkhammer**

Authorized Signatory

Sales Director

Tel.: +49 (0) 2735 787-273

Fax: +49 (0) 2735 787-493

Mobile: +49 (0) 151 64625182

E-Mail: gklinkhammer@schaefer-container-systems.de

### SALES D / A / CH

**Carsten Dirk Sauer**

Area / Key Account Sales Director D / A / CH

Tel.: +49 (0) 2735 787-361

Fax: +49 (0) 2735 787-493

Mobile: +49 (0) 175 1916138

E-Mail: cdsauer@schaefer-container-systems.de

**Michael Ernst**

Sales Germany / Switzerland

Tel.: +49 (0) 2735 787-488

Fax: +49 (0) 2735 787-493

Mobile: +49 (0) 171 4135945

E-Mail: mernst@schaefer-container-systems.de

**Marius Heinz**

Sales Germany

Tel.: +49 (0) 2735 787-605

Fax: +49 (0) 2735 787-493

E-Mail: maheinz@schaefer-container-systems.de

### International Sales

**Rüdiger Diensberg**

Authorized Signatory

Area / Key Account Sales Director

Tel.: +49 (0) 2735 787-524

Fax: +49 (0) 2735 787-493

Mobile: +49 (0) 171 3865648

E-Mail: rdiensberg@schaefer-container-systems.de

**Zdeněk Zelený**

Authorized Signatory

Area / Key Account Sales Director

Tel.: +420 569 711-222

Fax: +420 569 711-226

Mobile: +420 602 36 62 17

E-Mail: zzeleny@schaefer-sudex.cz

### Service and Order Centre

**Peggy Korzak**

Back Office Sales

Tel.: +49 (0) 2735 787-481

Fax: +49 (0) 2735 787-493

E-Mail: pkorzak@schaefer-container-systems.de

**Eva-Maria Krahforst**

Back Office Sales

Tel.: +49 (0) 2735 787-418

Fax: +49 (0) 2735 787-493

E-Mail: ekrahforst@schaefer-container-systems.de

**Tasja Pulverich**

Back Office Sales

Tel.: +49 (0) 2735 787-565

Fax: +49 (0) 2735 787-493

E-Mail: tpulverich@schaefer-container-systems.de

**Jana Jelínková**

Back Office Sales

Tel.: +420 569 711-221

Fax: +420 569 711-226

E-Mail: jjelinkova@schaefer-sudex.cz

**Jarka Pavelkova**

Back Office Sales

Tel.: +420 569 711-241

Fax: +420 569 711-226

E-Mail: jpavelkova@schaefer-sudex.cz

### Technical Support

**Stefan Schreiber**

Manager Technical Consultancy and Service

Tel.: +49 (0) 2735 787-450

Fax: +49 (0) 2735 787-493

Mobile: +49 (0) 170 2372948

E-Mail: sschreiber@schaefer-container-systems.de

### International Agents Europe

**Benelux / France****Rainer Beyer**

QuaDis Luxembourg S.A.

B.P.17

L-9901 Troisvierges G.D. Luxembourg

Tel.: +352 26 95 73 18

Fax: +352 26 95 73 19

Mobile: +352 621 288 188

E-Mail: info@rainer-beyer.com

**Great Britain / Ireland****Mike Hickman**

1 Ladybower Way

Yarnfield, Stone

ST15 OWL

Great Britain

Mobile: +44 75 38 06 98 86

E-Mail: mhickman@schaefer-container-systems.com

**Austria****Franz Gruber**

Franz-Engl-Straße 11

A-4780 Schärding am Inn

Tel.: +43 7712 34 63

Fax: +43 7712 77 27

Mobile: +43 66 43 50 84 44

E-Mail: franz\_gruber@inext.at

**Poland****Tadeusz Gonciarzyk**

KEG SERVIS

Ul. Wałowa 3

PL-51-523 Wrocław

Tel.: +48 71 34 666 32

Fax: +48 71 34 666 88

Mobile: +48 505 154 152

E-Mail: biuro@keg-service.pl

**Denmark****Christian Torstein**

TORSTEIN DRIKKEVARE SERVICE

Drikkevareservice apS

Strandvejen 42, Saksild

DK-8300 Odder

Tel.: +45 86 559 772

Fax: +45 86 559 793

E-Mail: info@torstein.dk

www.torstein.dk



# Individual consulting available locally

## Overseas

### Slovenia / Croatia / Serbia / Kosovo / Bosnia and Herzegovina / Montenegro / Macedonia

#### Veljko Živanović

VB Elitte System d.o.o.  
Luke Vojodiá 47/24  
SRB-11090 Belgrad  
Tel.: +38 111 3561 369  
Mobile: +38 1 63 240 988  
E-Mail: veljkozivanovic@eunet.rs

### Russia

#### Alexander Gumenny

UBC Group  
7, Lermontovskaya str.  
Kharkov 61024  
Ukraine  
Tel: +38 057 700903  
Fax: +38 050 3255421  
E-Mail: a.gumenny@beer-co.com

### Israel

#### Moty Nagar

Nagar Mordechay - Moses Yazamut  
Menachem Begin 28  
IL-Modiin 71724  
Tel: +972 544 933976  
E-Mail: info@mosesbeer.co.il  
Internet: www.mosesbeer.co.il

### Egypt / Morocco / Tunisia / Cyprus / Iraq / Iran / Turkey / Greece / Jordan

#### Boulos Lebbos

F.B.I.C. SA  
Rue Willebrord Van Perck, 12  
B-1140 Bruxelles (Evere)  
Tel.: +32 2-4 28 11 33  
Fax: +32 2-4 28 20 03, +32/2-4 26 37 13  
Mobile: +32 4 75 41 92 81  
E-Mail: b.lebbos@fbicsa.com

### Australia / New Zealand

#### Gavin Troxler

Brewtique Pty Ltd.  
P.O. Box 7271  
Brookvale NSW 2100  
Australien  
Tel.: +61 284 89 88 88  
Fax: +61 283 23 43 57  
Mobile: +61 401 149 551  
E-Mail: gavin.troxler@brewtique.com.au  
www.brewtique.com.au

### USA

#### Richard Winslow

SCHAEFER CONTAINER SYSTEMS NA Inc.  
5275 Westgate Drive  
Atlanta, GA 30336  
USA  
Tel.: +1 404 349 4524  
Fax: +1 404 349 4526  
Mobile: +1 412 427 8002  
E-Mail: RWinslow@SchaeferContainers.com  
www.schaefer-container-systems.us

### India

#### Srihari Sriramaiah

Sanky Technical Consulting  
Private Ltd.  
33, 3rd Main, 3rd Cross. RMV 2nd Stage  
Dollar Colony, Bangalore 560094  
Indien  
Tel.: +91 80 23 51 59 00/1  
Fax: +91 80 23 51 59 05  
Mobile: +91 98 44 00 60 70  
E-Mail: hari@sanky.com

### Japan

#### Markus Luczynski

BET Co. Ltd  
Higashi Azabu 3-3-2 5F  
Minato ku, Tokyo 106-0044  
Japan  
Tel.: +81 3 6826 3232  
Fax: +81 3 5545 7394  
E-Mail: info@bet-tech.co.jp  
www.bet-tech.co.jp

### South Korea

#### Roy Kim

KIRIM DE., Co LTD  
1003, Daemyeong Valeon,  
Knowledge Industrial Center,  
127 Beopwon-ro  
Songpa-gu, Seoul 05836  
Südkorea  
Tel.: +82 2 2205 0303  
Fax: +82 2 2205 0304  
Mobile: +82 10 9191 9623  
E-Mail: roykim@kirimdraft.co.kr

### Vietnam

#### Nguyen Hoai Van

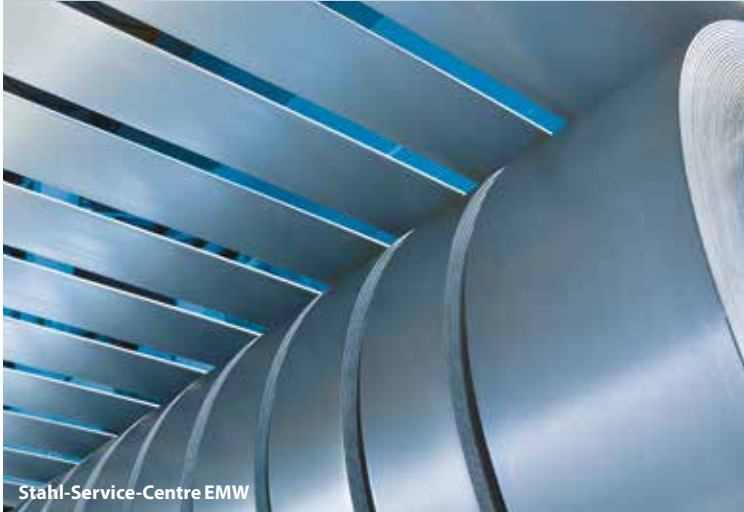
I & M Trading Co. Ltd.  
24 Nguy Nhu Kon Tum  
Thanh Xuan District  
Hanoi/Vietnam  
Tel.: +84 4 35 54 38 72  
+84 9 13 21 24 88  
Fax: +84 4 35 54 38 73  
E-Mail: vannguyenhoai@imco.com.vn

### South Africa

#### Mr. Michael Seydel

Satioscan (Pty) Ltd.  
1089 Kajuit Turn  
Allens Nek  
Roodepoort 1709  
Johannesburg  
South Africa  
Mobile: +27 73 149 2273  
E-Mail: keg@satioscan.co.za

XIII. The SCHÄFER WERKE Group of Companies



Stahl-Service-Centre EMW



SCHÄFER Perforated Metal



SCHÄFER Container Systems



SCHÄFER IT-Systems



SCHÄFER Interior Systems



SCHÄFER Industrial Solutions

# SCHÄFER WERKE – Expertise in steel processing

Within the SCHÄFER Group, **SCHÄFER WERKE** are the specialists for the development, manufacture and sale of fine steel sheet and stainless steel products. Constant growth and the uncompromising extension of the product range underline the company's successful strategy. The outstanding success of the five individual business areas lies above all in the ability to put customer wishes into practice quickly, while keeping the products themselves highly individual.

The extraordinary speed at which new sheet steel products can be realised stems from the close co-operation of all business areas with our own **EMW Steel Service Centre**, which, with a storage capacity of 100,000 t of fine steel sheet, can provide the coils, slit strips, cut-to-size sheets and circular blanks required for further processing in very high quality and at very short notice.

**SCHÄFER Perforated Metal** supply a broad and rapidly available range of highquality perforated plates and sheets for all sectors and application fields.

**SCHÄFER Container Systems** is one of the world's leading suppliers of reusable stainless steel beverage containers for beer, wine and soft drinks, as well as for IBCs and special containers for solid and liquid substances and granulates.



**SCHÄFER IT-Systems** supplies both standardised and customised network and server cabinets as well as data centre and water-cooled server cabinet solutions. Based on our own extensive and future-oriented expertise, these products and solutions are planned, designed and manufactured in the company's own production facilities.

**SCHÄFER Industrial Solutions** develops, designs and manufactures customised punched and bent parts, machine cladding, special and standard housing solutions in metal.

Our great manufacturing expertise, our extensive range of production equipment and our employees' outstanding level of qualification make SCHÄFER the ideal partner for contract manufacturing. By working with SCHÄFER, our customers can profit from measurable time and cost-saving benefits.



# Our production locations



Head office and production site at Neunkirchen (D)



Plant Betzdorf (D)



Plant Ledec nad Sázavou (CZ)

SCHÄFER Container Systems, one of the world's leading suppliers of container solutions for the beverages industry, is part of the internationally successful SCHÄFER WERKE group. The owner-led group of companies has its headquarters in Neunkirchen in Germany's Siegerland region. The work of all the SCHÄFER WERKE divisions – SCHÄFER Container Systems, SCHÄFER IT-Systems, SCHÄFER Industrial Solutions, SCHÄFER Perforated Metal, EMW Steel Service Center – is based on high-quality fine steel sheet. The processing of this material is one of the core competencies of this enterprise.

